



Platz  
HOTELS

Space for

Meetings &  
Events

Thanks to our 360° virtual tour,  
you can conveniently  
explore our premises with  
just one click.



**Platz**  
**HOTELS**  
Munich

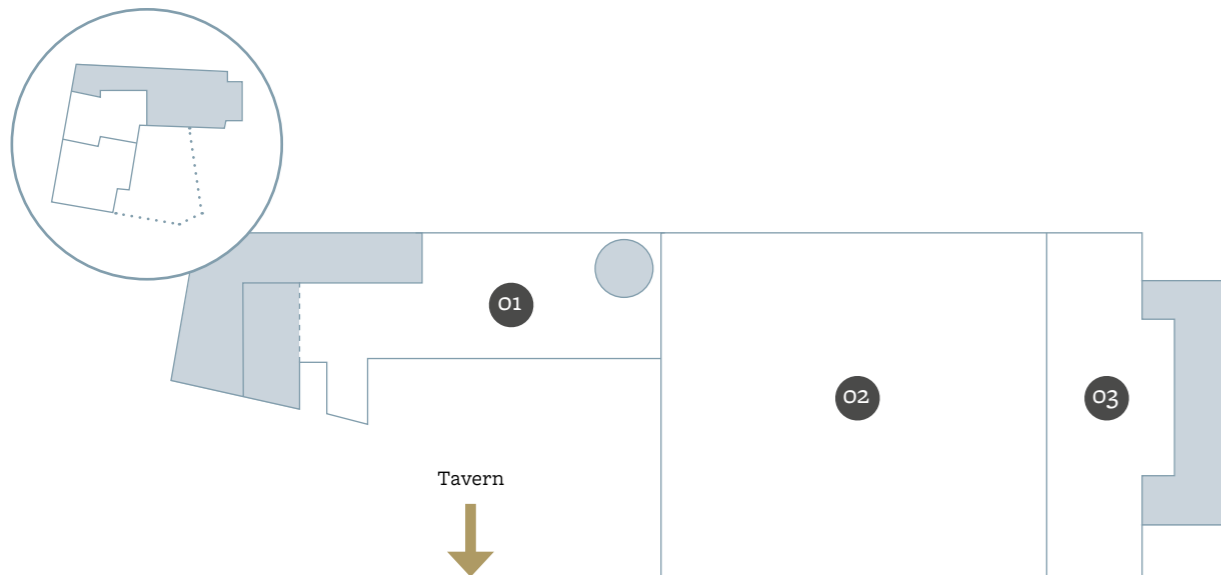
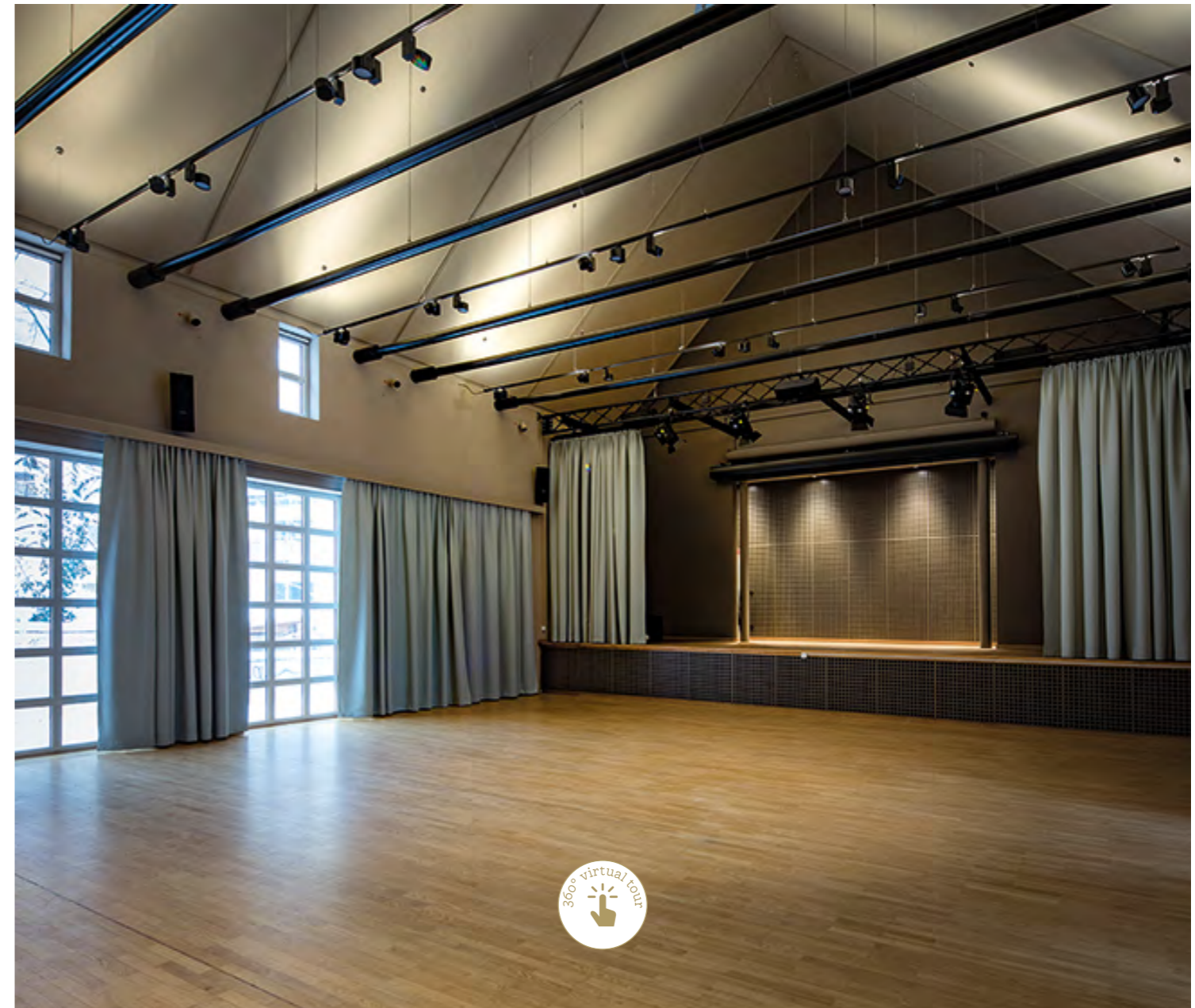
# New Work starts here: Kreszenz<sup>4</sup> – The Event Venue

The versatile Kreszenz<sup>4</sup> blends traditional Munich flair with modern technology and comfort, making it the perfect venue for flexible business events such as lectures, workshops, world cafés, or product presentations. With a stage and complete equipment, the room offers everything needed for a successful event.

01 Foyer

02 Event hall

03 Stage



01





## Equipment

- > Ventilation System
- > Room Darkening
- > Lighting System, dimmable, electronically controlled
- > 2 theatre spotlights (white), 2 RGB lights for colour exchange (on stage), electronically controlled
- > Screen, format of 16:10, width 5.40 m × height 3.38 m, electronically controlled
- > Sound Mixer, port for external equipment available (on stage)
- > BOSE sound system incl. 2 handheld micros/stands and 2 headset micros
- > WiFi with 100Mbit/s
- > Projector: SONY WUXGA projector with 12.000 ANSI Lumen, video signal feed hall/stage via HDMI (max. 4K) or via ClickShare technology sound feed via 3.5 mm jack connector in the hall

## Capacities

Parliamentary	72
U-Shape	42
Block	54
Theatre	150
Banquet – round tables	96
Banquet – Tabels	120
Showroom	160
Standing reception	180

# Ayinger in der Au – Simply Great Food

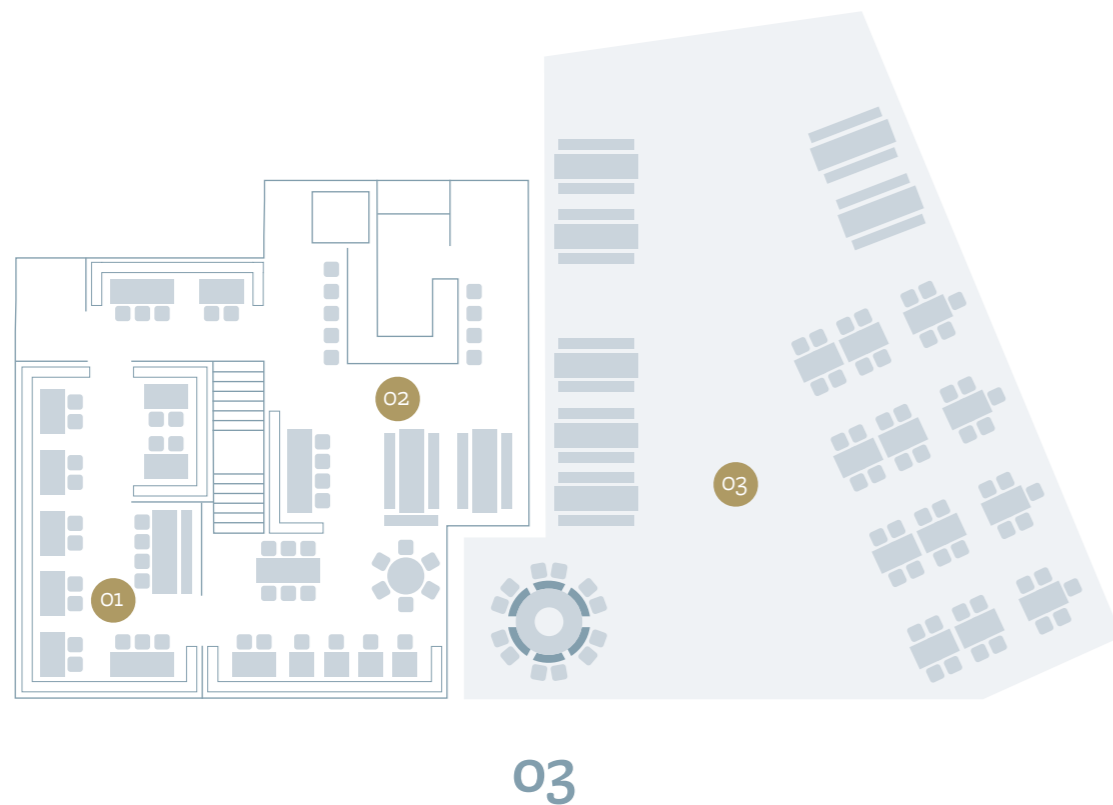
Ayinger in the Au offers not only excellent cuisine but also venues for private and business events. The adjoining, weatherproof beer garden is perfect for social receptions or to round off the evening.

## Opening hours

Mon, Tue	closed
Wed, Thur	5 p.m. – 12.30 p.m.
Fr, Sat	10.30 a.m. – 11.00 p.m.
Sun	10.30 a.m. – 11.30 p.m.

## Capacities

total	127
01 Private seating	50
02 Main seating	77
03 Beer garden	200





# Marias Platzl – Love for Hops and a Sense of Home

After a successful event, Marias Platzl Hotel offers the perfect retreat with 34 newly renovated rooms where your guests can relax and feel at home. Combining modern comfort with Bavarian charm, the hotel ensures every guest feels like they are at home. A stroll through the picturesque Munich Au or a visit to the adjacent Ayinger in der Au is the perfect way to unwind and end the day in peace.

## Capacities

9 Queen Bed Rooms	queen size bed	~ 15 m <sup>2</sup>
22 Double Rooms	king size bed with 2 mattresses	~ 20 m <sup>2</sup>
3 Superior Rooms	king size bed with 2 mattresses	~ 36 m <sup>2</sup>



# Location & Directions

Marias Platzl Hotel is located right at the Mariahilfplatz, in the beautiful historical neighborhood of Au-Haidhausen. Public transportation, restaurants, bars and shopping opportunities as well as a variety of sights and cultural highlights are within walking distance.

## How to reach us

by bus	Schweigerstraße	2 min.	♿
by tram	Mariahilfplatz	5 min.	♿
by underground railway (U-Bahn)	Fraunhoferstraße	10 min.	♿
by suburban railway (S-Bahn)	Rosenheimer Platz	11 min.	♿

## Distances

Marienplatz	1,0 mile	20 min.	♿
Main station	1,8 miles	35 min.	♿
Trade fair	5,6 miles	17 min.	🚗
Airport	22,3 miles	35 min.	🚗

If you travel by car simply enter the following address into your navigation system: Mariahilfplatz 4, 81541 Munich

Public parking space is available in the immediate vicinity. Overnight guests benefit from private underground parking.





Where  
Munich's  
heart  
beats



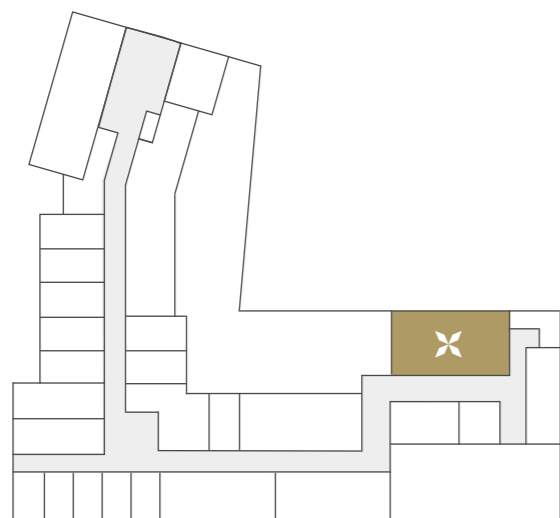
## Events with Heart & Charakter

**Whether in the heart of Munich's Old Town or the historically rich district of Au – the Platzl Hotels offer a unique setting for both business and private occasions.**

At Platzl Hotel, you'll find a versatile event space featuring elegant rooms that blend modern technology with a distinctive mix of Bavarian charm and urban sophistication. Right in the centre of Munich, every presentation, meeting, or celebration becomes a memorable highlight – professionally supported by a creative team dedicated to bringing your ideas to life.

Just a short walk away, Kreszenz<sup>4</sup> at Marias Platzl Hotel offers a flexible venue full of character. Whether for innovative workshops, large-scale product launches, festive banquets, or relaxed evening gatherings – tradition, technology, and hospitality come together to create an unforgettable atmosphere.

Two locations, one experienced team, and endless possibilities to make your event truly special.



## Weiß-Ferdl-Stube

With its bright parquet flooring and high ceilings, Weiß-Ferdl-Stube provides the ideal setting for full-day conferences or presentations.

The adjoining winter garden, featuring direct access, is perfect for standing receptions or small exhibitions – in every season.

### Equipment

- > Projector with HDMI and VGA connection
- > 4000 ANSI Lumen
- > Screen format 3.0 m × 2.5 m
- > Bose sound system

<b>Size m<sup>2</sup></b>	111
---------------------------	-----

#### Capacities

Classroom	50
-----------	----

U-Shape	36
---------	----

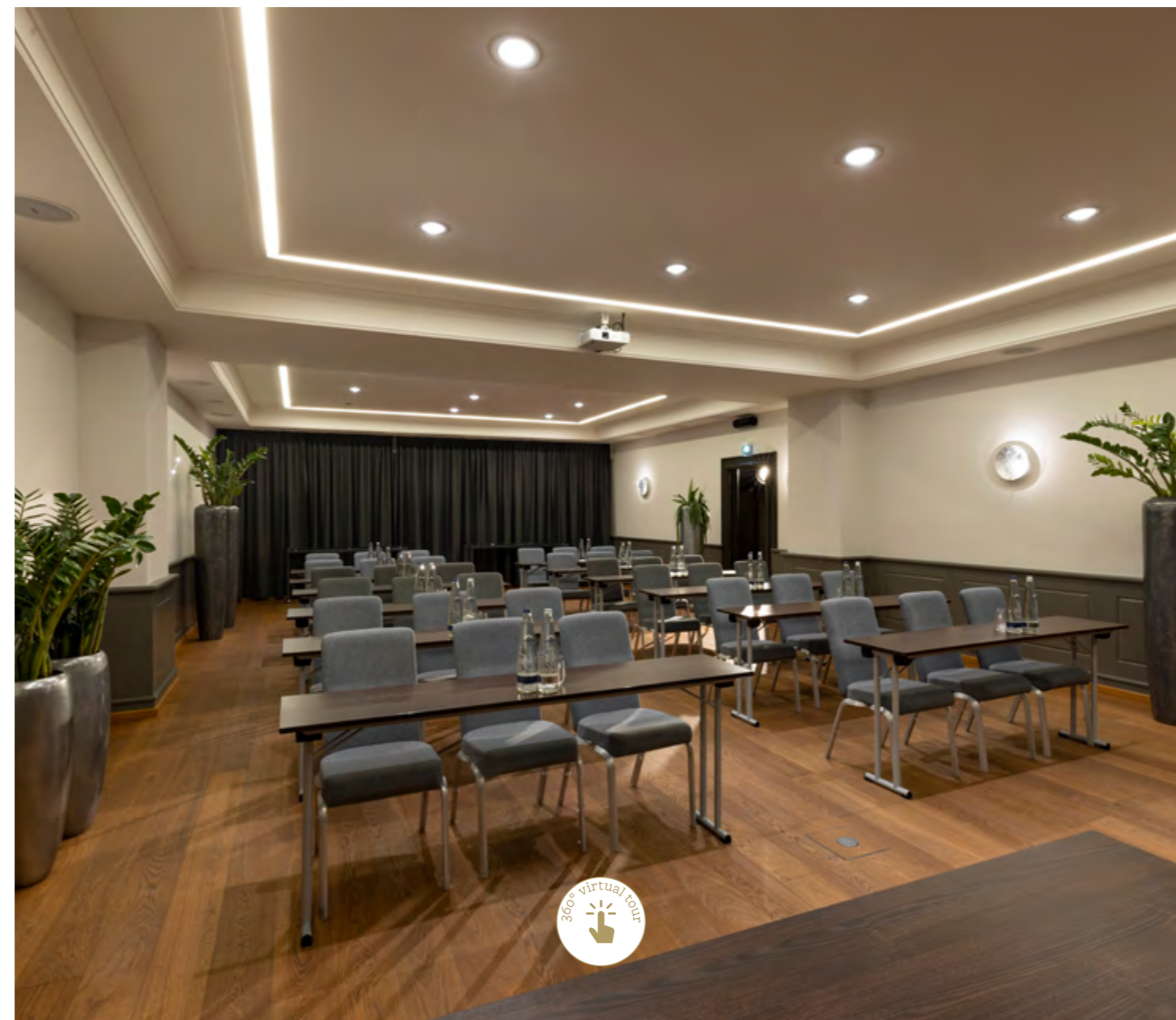
Block	35
-------	----

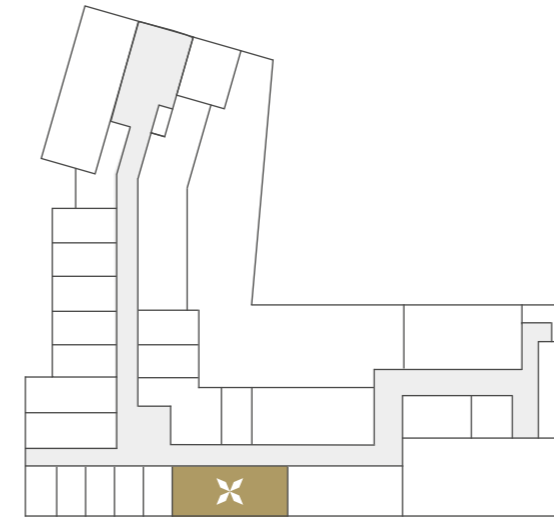
Theatre	70
---------	----

Banquet, Table	38
----------------	----

Banquet, round tables, à 8 people	48
-----------------------------------	----

Standing reception	100
--------------------	-----





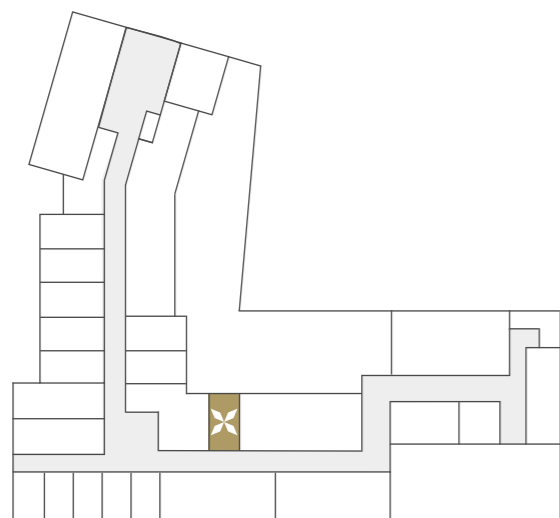
## Karl-Valentin-Stube

Karl-Valentin-Stube combines Bavarian charm with modern technology – featuring wood panelling, large windows, and a charming balcony. An ideal space for seminars, intimate conferences, or special celebrations.

### Equipment

- > Projector with HDMI and VGA connection
- > Screen format 1.3 m × 2.1 m
- > Bose sound system incl. micro

<b>Size m<sup>2</sup></b>	70
<b>Capacities</b>	
Classroom	30
U-Shape	20
Block	26
Theatre	50
Banquet, Table	32
Banquet, round tables, à 8 people	40
Standing reception	70



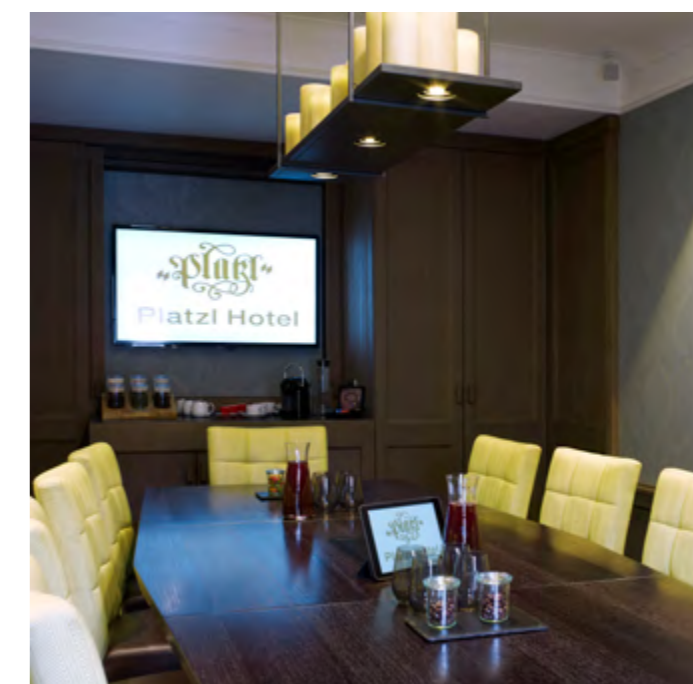
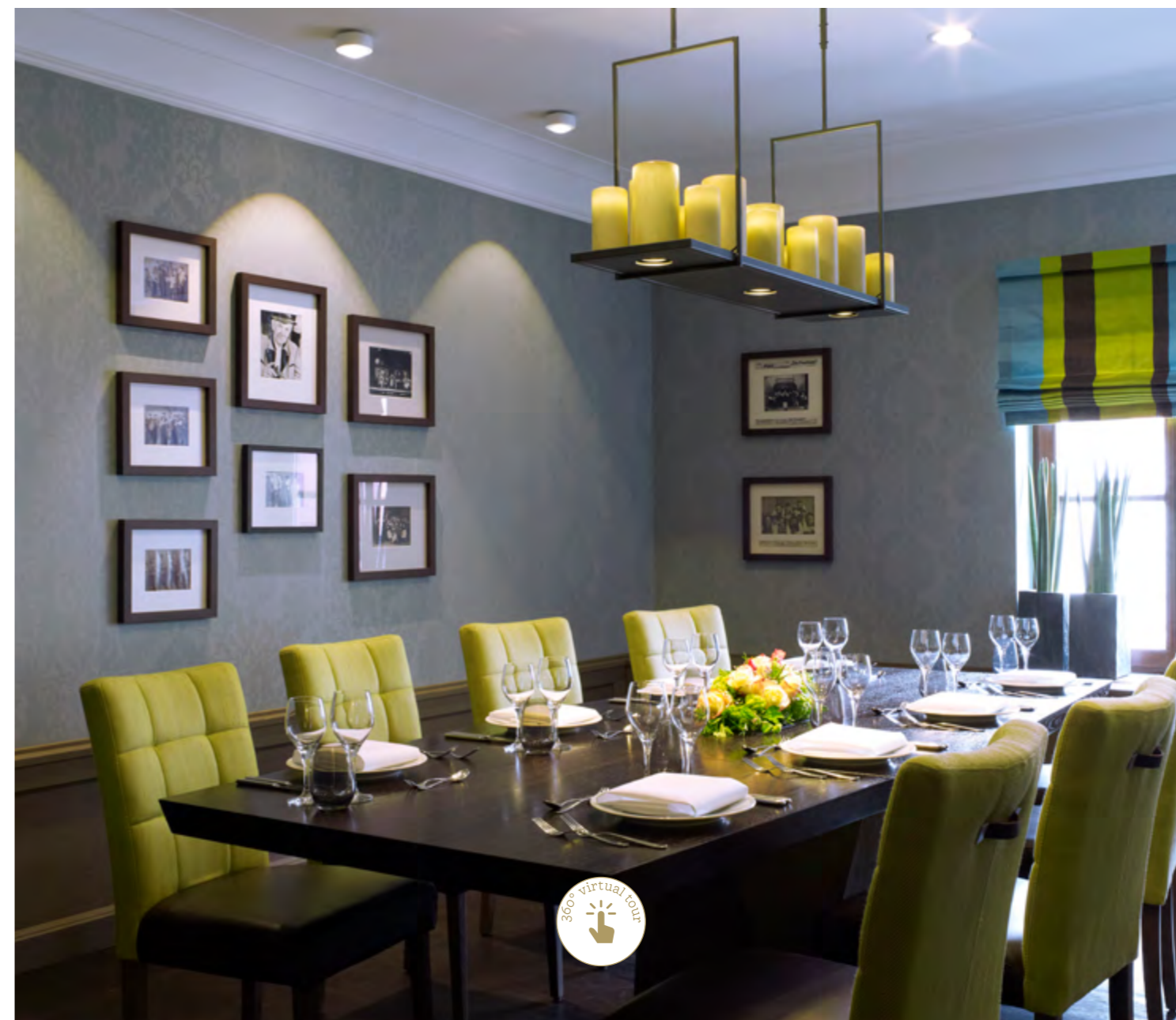
## Schmid-Wildy-Stube

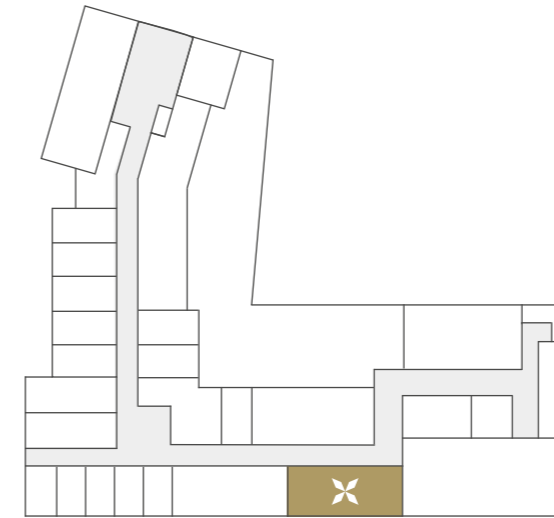
Schmid-Wildy-Stube impresses with its quiet location facing the inner courtyard and its warm, modern atmosphere – perfect for meetings and seminars of up to ten people. It also serves as a flexible breakout room for larger events.

<b>Size m<sup>2</sup></b>	26
<b>Capacities</b>	
Block, Table	10

### Equipment

- > Flat-screen TV with VGA connection
- > Bose sound system





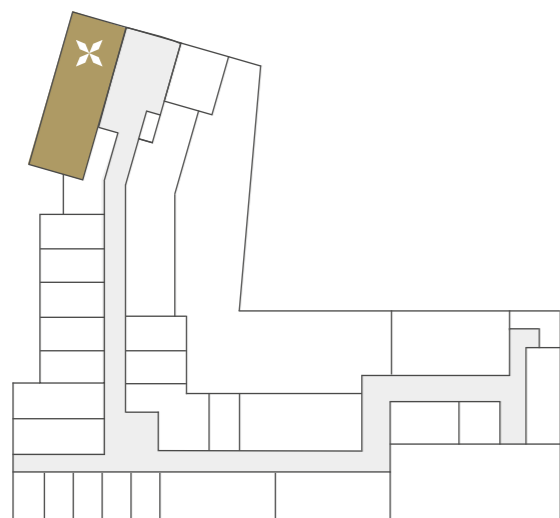
# Marktplatzl

Experience true Munich flair with breakfast at Marktplatzl, located in Platzl Hotel. From 2 p.m., the space transforms into a versatile venue for press conferences, presentations, or elegant banquets – complete with creative lunch buffets for business occasions.

## Equipment

> Microphone system

<b>Size m<sup>2</sup></b>	158
<b>Capacities</b>	
Classroom	80
U-Shape	56
Block	60
Theatre	110
Banquet, Table	110
Banquet, round tables, à 8 people	72
Standing reception	150



# Müller-Pfister-Stube

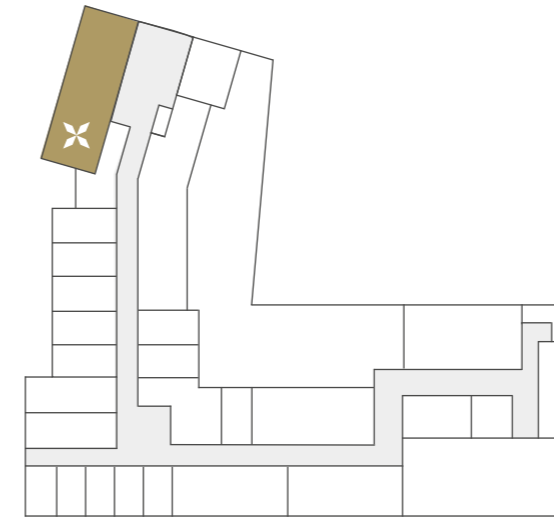
Clad entirely in fragrant Swiss pine wood, Müller-Pfister-Stube offers a perfect blend of Bavarian tradition and refined atmosphere. The bright foyer is ideal for receptions, breaks, or exhibitions - with direct access to the Pfistermühle restaurant and the Bäcker-Stube.

## Equipment

- > Projector with HDMI connection
- > Bose sound system
- > soundproof partition wall
- > LED spots in the round arches - choosable colours
- > microphone

<b>Size m<sup>2</sup></b>	60
<b>Capacities</b>	
Classroom	25
U-Shape	20
Block	26
Theatre	50
Banquet, Table	32
Banquet, round tables, á 8 people	32
Standing reception	50





## Bäcker-Stube

With its vaulted Swiss pine ceiling and rustic charm, Bäcker-Stube offers a distinctive setting with flexible uses – ideal for meetings, group work, or special business lunches. It can also be combined with adjacent rooms for larger events.

### Equipment

- > Projector with HDMI connection
- > screen
- > Music via Bluetooth or RCA

<b>Size m<sup>2</sup></b>	24
<b>Capacities</b>	
Block, Table	6
Standing reception	10

# Co-Working-Space

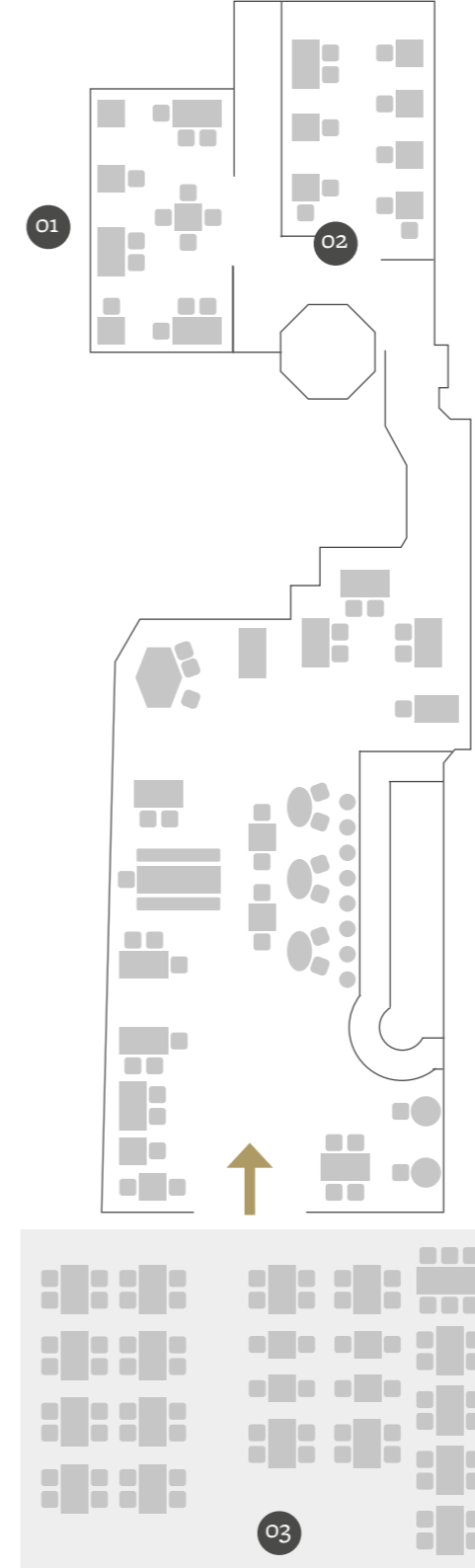
Located in the heart of Munich, the co-working space at Platzl Hotel offers a quiet and focused work environment. As part of Josefa bar, it provides guests with premium Dallmayr coffee and delicious snacks. Whether for meetings, creative project work, or as a second workspace – this is the perfect place to work undisturbed at any time.

## Equipment

> Can be converted into a separate meeting room using curtains.

<b>Size m<sup>2</sup></b>	<b>37</b>
<b>Capacities</b>	
Block	8





# Ayinger am Platzl

The Ayinger am Platzl inn combines vibrant tavern tradition with hearty cuisine – from Weißwurst to vegetarian dishes, freshly tapped Ayinger beer, and a cozy atmosphere. For special occasions and events, the rustic Jagdstube is available. Whether it's a communal Reindl meal to round off the day, a traditional wooden barrel tapping, or a business meeting with a touch of Bavarian flair – here, enjoyment becomes an experience.

## Capacities

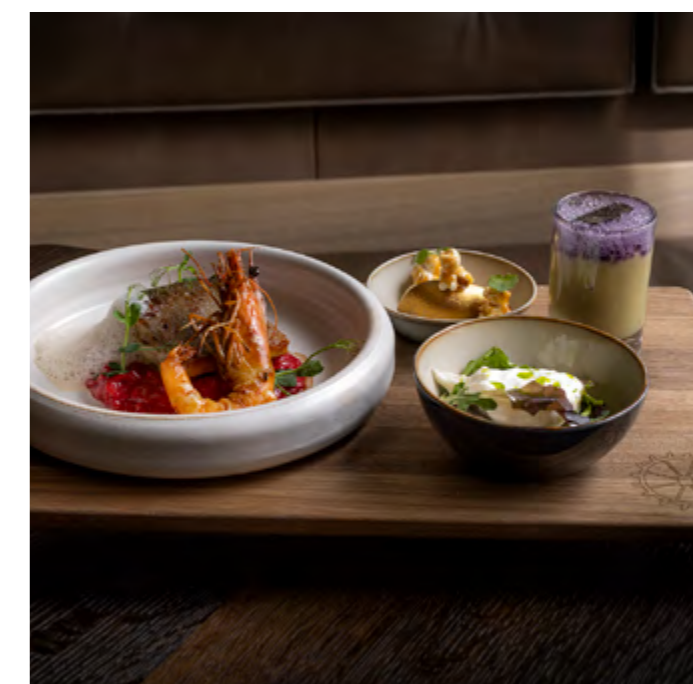
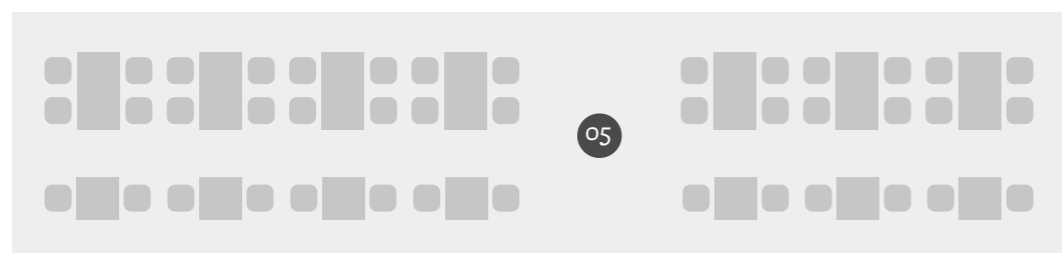
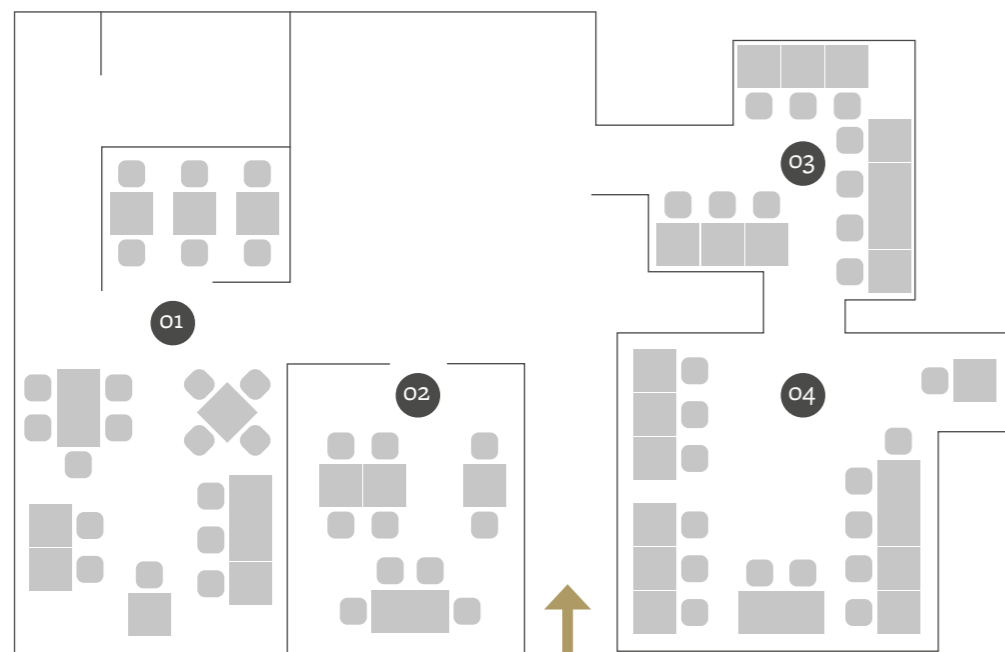
tavern total	160
01 Jagdstube	20
02 Group area	30
03 Terrace	25

# Pfistermühle

At the Pfistermühle, our young kitchen team transforms regional ingredients with artisanal finesse – grounded, creative, and full of flavor. The restaurant's rooms are available for exclusive private or business events. Or how about a casual business lunch with our Mittagsbrett! We also offer the option of an exclusive kitchen party!

## Capacities

total	86
01 Backstube	30
02 Erntekammer	10
03 Pfisterbach	23
04 Mühlstein	30
05 Terrace	48





# Josefa

Josefa and its outdoor area, Josefa Karree, are ideal for social gatherings and special events. Whether for private or business meetings, the cozy atmosphere can be exclusively booked. Adjacent to it is the modern co-working space, and the rentable outdoor area is perfect for sunny hours.



## Opening hours

### Josefa

daily 7.30 a.m. - 10 p.m.

### Josefa Karree

Thur, Fr 4 p.m. - 10 p.m.

Sat 1 p.m. - 8 p.m.

(Only open when the weather is favorable.)

## Personen

Indoor area	50
Outdoor area	50

# Platzl Hotel – A Munich Original!

After a successful event at the Platzl Hotel, you can unwind and enjoy a relaxing overnight stay in one of our cozy hotel rooms. Spend your leisure time in our Schwitzstube, indulge in a massage, or enjoy a drink at the Josefa. Start the next day with a rich and nourishing breakfast to fuel your morning.

Our 164 rooms and 15 suites offer a cozy retreat in warm Platzl hues and high-quality materials. Special touches like beer-infused cosmetics and our pillow menu ensure a truly unique and comforting experience.

## Room categories

### CLASSIC

6 Single Rooms	~ 13/15 m <sup>2</sup>
36 Queenbed Rooms	~ 22 m <sup>2</sup>
4 Twin Rooms	~ 26 m <sup>2</sup>
43 Double Rooms	~ 26 m <sup>2</sup>

### STANDARD

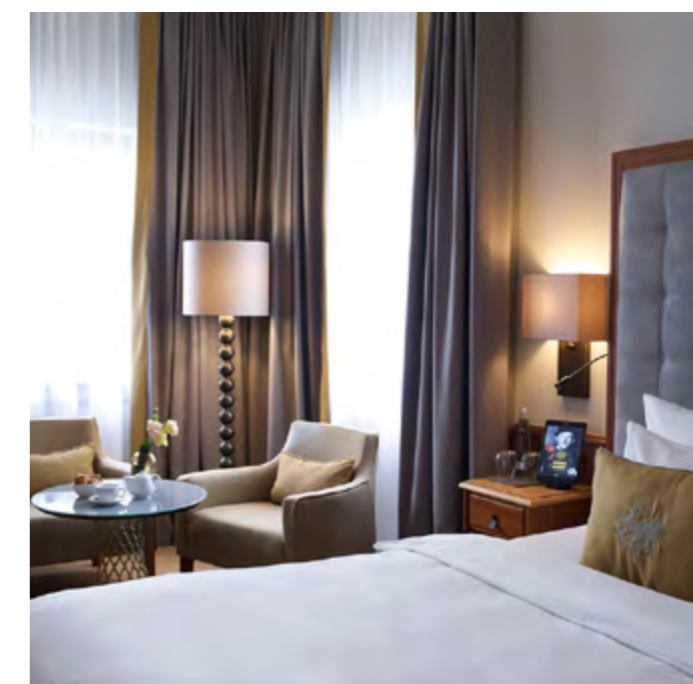
18 Queenbed Rooms	~ 15 m <sup>2</sup>
1 Twin Rooms	~ 18 m <sup>2</sup>
1 Double Rooms	~ 18 m <sup>2</sup>

### SUPERIOR

26 Double Rooms	~ 24 m <sup>2</sup>
4 Twin Rooms	~ 24 m <sup>2</sup>

### DELUXE

21 Double Rooms	~ 28 m <sup>2</sup>
4 Twin Rooms	~ 28 m <sup>2</sup>











# Location & Directions

Platzl Hotel is just a few steps from Marienplatz, right in the heart of Munich. Thanks to excellent public transport connections, you can easily and quickly reach us from the main train station or directly from Munich Airport. A location that perfectly combines comfort with experience!

## How to reach us

by suburban railway (S-Bahn)	Marienplatz	2 min.	
by underground railway (U-Bahn)	Marienplatz	2 min.	

## Distances

Marienplatz	0,1 miles	2 min.	
Main station	1,0 mile	22 min.	
trade fair	5,5 miles	19 min.	
Airport	21,9 miles	31 min.	

If you travel by car simply enter the following address into your navigation system: Sparkassenstraße 10, 80331 Munich

Public parking space is available in the immediate vicinity. Our guests also benefit from the underground parking area next to the hotel.

# Pfiat di & see you soon

**„Platzl“**  
HOTELS

**PLATZL HOTEL**

Pfistermühle  
Ayinger am Platzl  
Josefa

Sparkassenstraße 10, 80331 Munich  
+49 89 23 703 0, [servus@platzl.de](mailto:servus@platzl.de)  
[www.platzl.de](http://www.platzl.de)



**MARIAS PLATZL HOTEL**

Kreszenz<sup>4</sup> - der Saal  
Ayinger in der Au

Mariahilfplatz 4, 81541 München  
+49 89 622 337 0, [servus@mariasplatzl.de](mailto:servus@mariasplatzl.de)  
[www.mariasplatzl.de](http://www.mariasplatzl.de)

**Event inquiries &  
group requests (ab 10 Zimmer)**  
+49 89 23 703 777, [sales@platzl.de](mailto:sales@platzl.de)